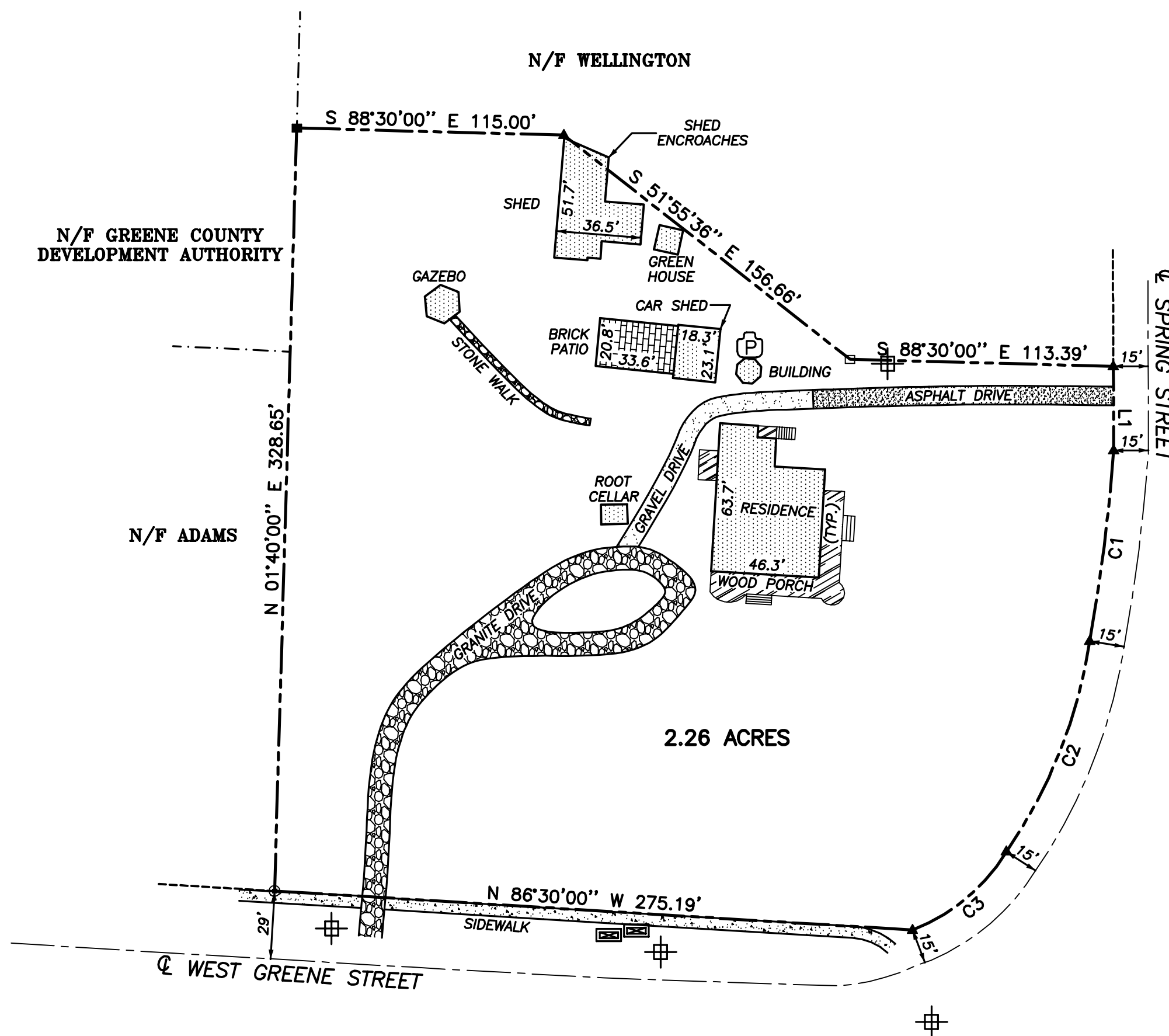
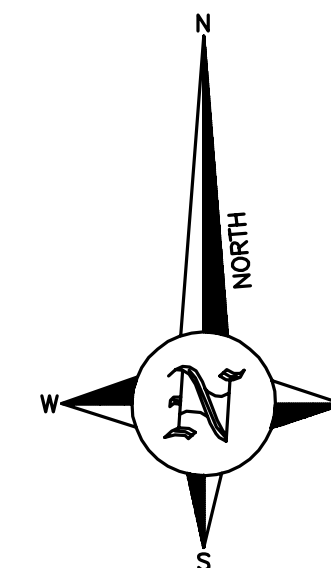


PLAT REFERENCES

- PLAT BOOK 2; PAGE 71.
- PLAT CABINET 1; SLIDE 416; PAGE 4.



LEGEND	
■	- #3 REBAR FOUND
⊙	- 1/2" PIPE FOUND
□	- 1-1/2" FLAT IRON FOUND
▲	- #4 REBAR SET
⊞	- WATER METER
⊞	- POWER POLE
⊞	- PROPANE TANK

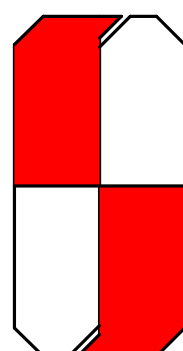


**** GENERAL NOTES ****

1. THIS PROPERTY DOES NOT LIE WITHIN A FLOOD PRONE AREA ACCORDING TO F.I.R.M. COMMUNITY PANEL #130220 0005 A.
2. THIS PLAT IS SUBJECT TO ALL EASEMENTS, RIGHTS-OF-WAY, AND PROTECTIVE COVENANTS OF RECORD.
3. ALL UTILITIES ARE NOT LOCATED ON THIS PLAT.
4. FENCES ARE NOT LOCATED ON THIS PLAT.

LINE	DIRECTION	DISTANCE
L1	S 00°13'37" E	36.26'

CURVE	DIRECTION	RAD °	ARC °	CHORD °
C1	S 07°08'41" W	802.14	82.72	82.68
C2	S 21°35'01" W	218.48	98.38	97.55
C3	S 50°12'44" W	82.08	53.64	52.69



JOHN A. MCGILL, P.C.
Land Surveying · Land Planning

The Oconee Company, Est. 1997
1961 South Main Street
Greensboro, Ga. 30642
Phone: (706) 453-1913
Fax: (706) 453-1914

McGill And Associates, Est. 1972
934 Shields Pond Road
Thomson, Ga. 30024
Phone: (706) 595-5612
Fax: (706) 595-0971

THE FIELD DATA UPON WHICH THIS PLAT IS BASED HAS A CLOSURE PRECISION OF ONE FOOT IN 54,192' FEET AND AN ANGULAR ERROR OF <1" PER ANGLE POINT, AND WAS ADJUSTED USING LEAST SQUARES. ANGLES TURNED BY A TOPCON GTS 211 AND DISTANCES MEASURED WITH A TOPCON GTS 211.

PLAT FOR:

**JACOMO RALLO &
JEFFREY G. HOUGH**

CITY OF GREENSBORO
143th G.M.D.; GREENE COUNTY, GEORGIA

SURVEY DATE	OCTOBER 22, 2001
DATE DRAWN	OCTOBER 30, 2001
MAP CLOSURE	1/164,033
DRAWN BY	J.T.A.
JOB NO.	G1450
FILE PATH	D:\EPDATA\01\G1450\G1450.DWG
REVISIONS	

